

**Bb.**

**Monsieur Notebook Soft Leather**

Product Details

# Bb.

## PRODUCT DETAILS

### MONSIEUR NOTEBOOK SOFT LEATHER

These notebooks are made with one flat piece of Tuscan leather, rough-cut to leave an exposed edge giving a rustic look.

#### PAPER TYPES

Ivory 90 GSM Ruled  
Plain 90 GSM  
Dot Grid 90 GSM  
Sketch 140 GSM

#### PAGE COUNT

192  
192  
192  
96

#### MOQ

100

#### CUSTOMISATIONS

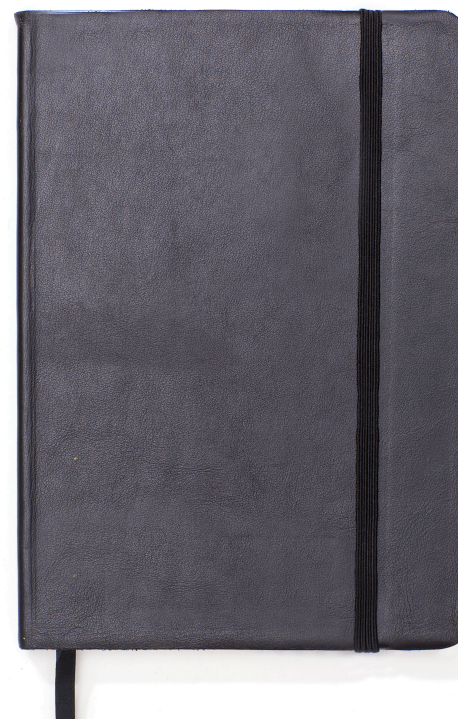
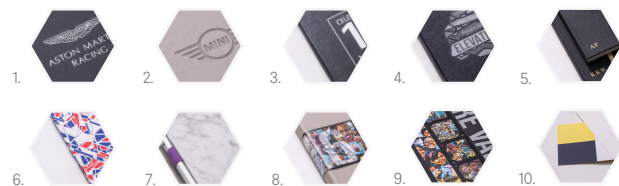
1. Foiling
2. Debossing
3. Screen Printing
4. UV Printing
5. Monogramming
6. Digital Printing
7. Elastic, Ribbon, Pen Loops
8. Packaging & Belly Bands
9. Page Inserts
10. Pockets

#### SIZES

210 x 148mm (A5)  
148 x 105mm (A6)

#### INTERNAL PAGE SIZES

210 x 148mm + 5mm bleed (A5)  
148 x 105mm + 5mm bleed (A6)



80 colours available  
(Colour cards sent separately)

### Bookblock

4-6 Denbigh Mews  
London  
SW1V 2HQ

UK / +44 (0) 203 514 1281

USA / +1 (312) 337-0747

info@bookblock.com

www.business.bookblock.com

## BELLY BAND ARTWORK

### A5 NOTEBOOK

210 x 148mm Cover, 1 - 2mm lip

#### ARTWORK

Trim Size

Bleed = 5mm

Fold Lines / Edge of Book

Elastic - 15mm from edge



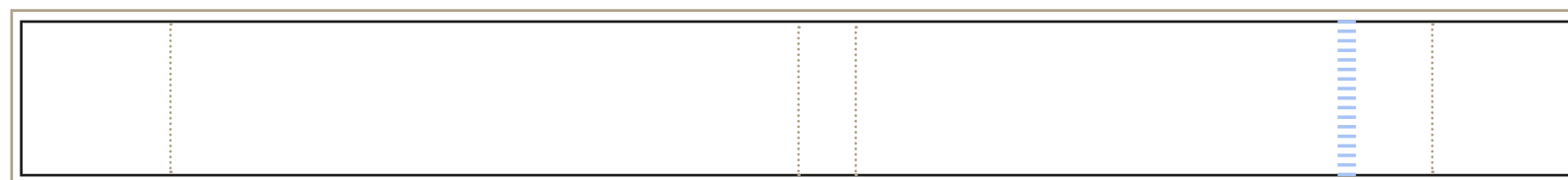
Back Edge

150mm

15mm

150mm

Front Edge



TOTAL LENGTH = c.375mm

HEIGHT = 40 - 60mm

**\*PLEASE NOTE THIS IS A  
GUIDELINE ONLY.  
PLEASE DO NOT PLACE YOUR  
ARTWORK IN THIS FILE.**

### Bookblock

4-6 Denbigh Mews

London

SW1V 2HQ

-

UK / +44 (0) 203 514 1281

USA / +1 (312) 337-0747

info@bookblock.com

www.business.bookblock.com

# Bb.

## BELLY BAND ARTWORK

### A6 NOTEBOOK

148 x 105mm Cover, 1 - 2mm lip

#### ARTWORK

Trim Size

Bleed = 5mm

Fold Lines / Edge of Book

Elastic - 15mm from edge



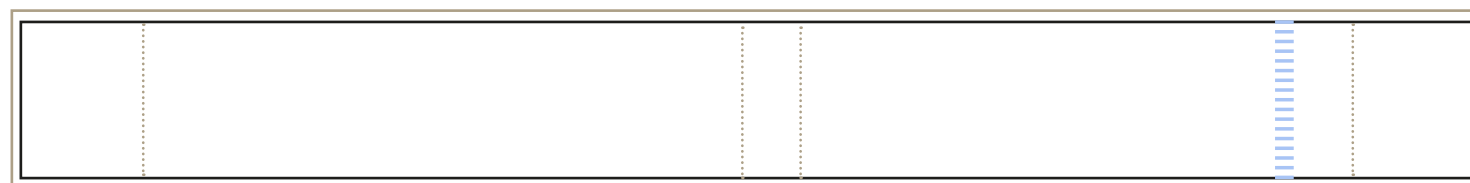
Back Edge

105mm

15mm

105mm

Front Edge



TOTAL LENGTH = c.285mm

HEIGHT = 40 - 60mm

**\*PLEASE NOTE THIS IS A  
GUIDELINE ONLY.  
PLEASE DO NOT PLACE YOUR  
ARTWORK IN THIS FILE.**

### Bookblock

4-6 Denbigh Mews

London

SW1V 2HQ

-

UK / +44 (0) 203 514 1281

USA / +1 (312) 337-0747

info@bookblock.com

www.business.bookblock.com

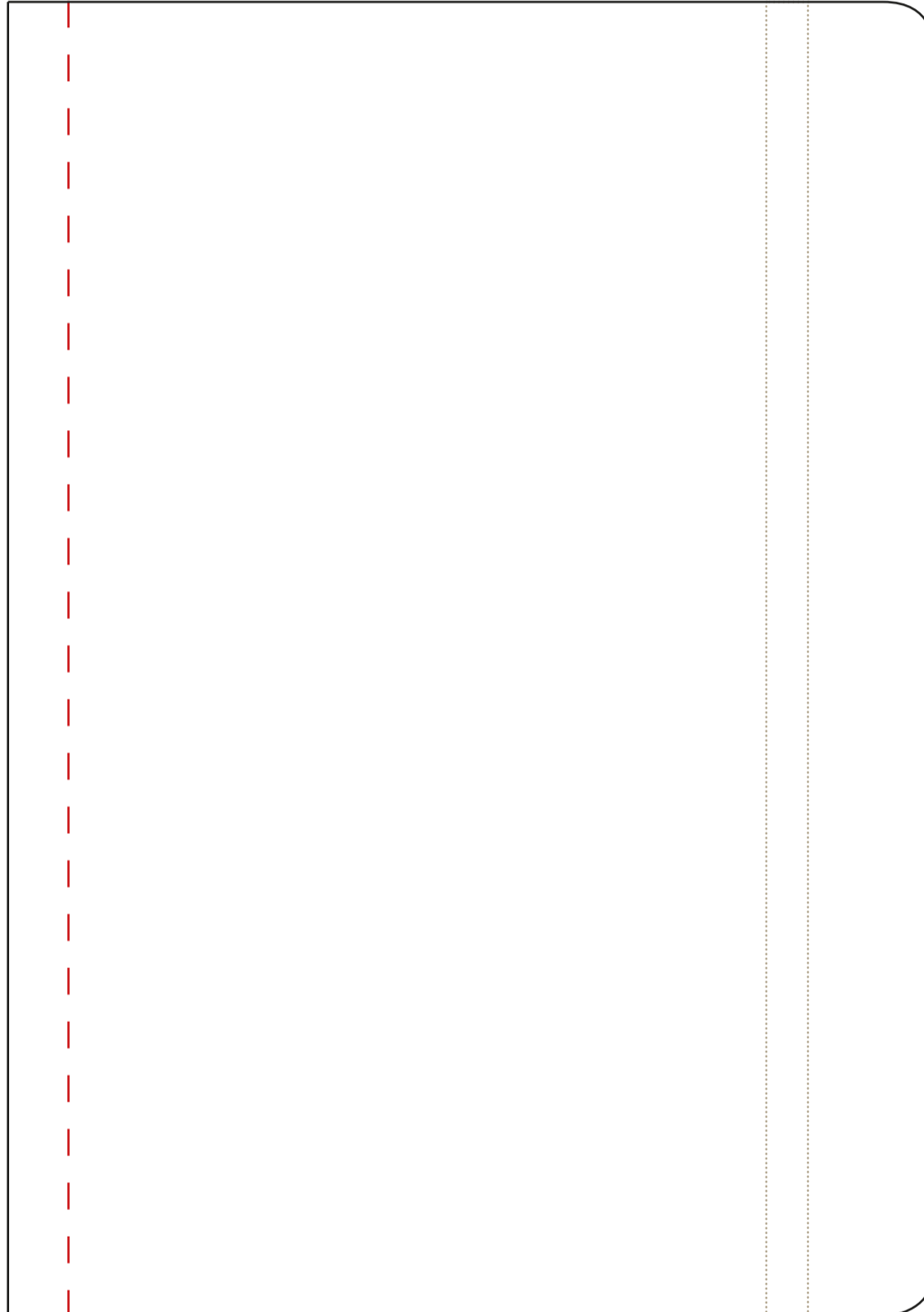
## COVER TEMPLATE

A5 NOTEBOOK  
210 x 148mm Cover

**DISCLAIMER:**  
For full bleed designs, add 3mm.

### ARTWORK

Cover size (1:1 scale)  
Elastic = 20mm from edge / 7mm width  
Limit of customisation for stock items



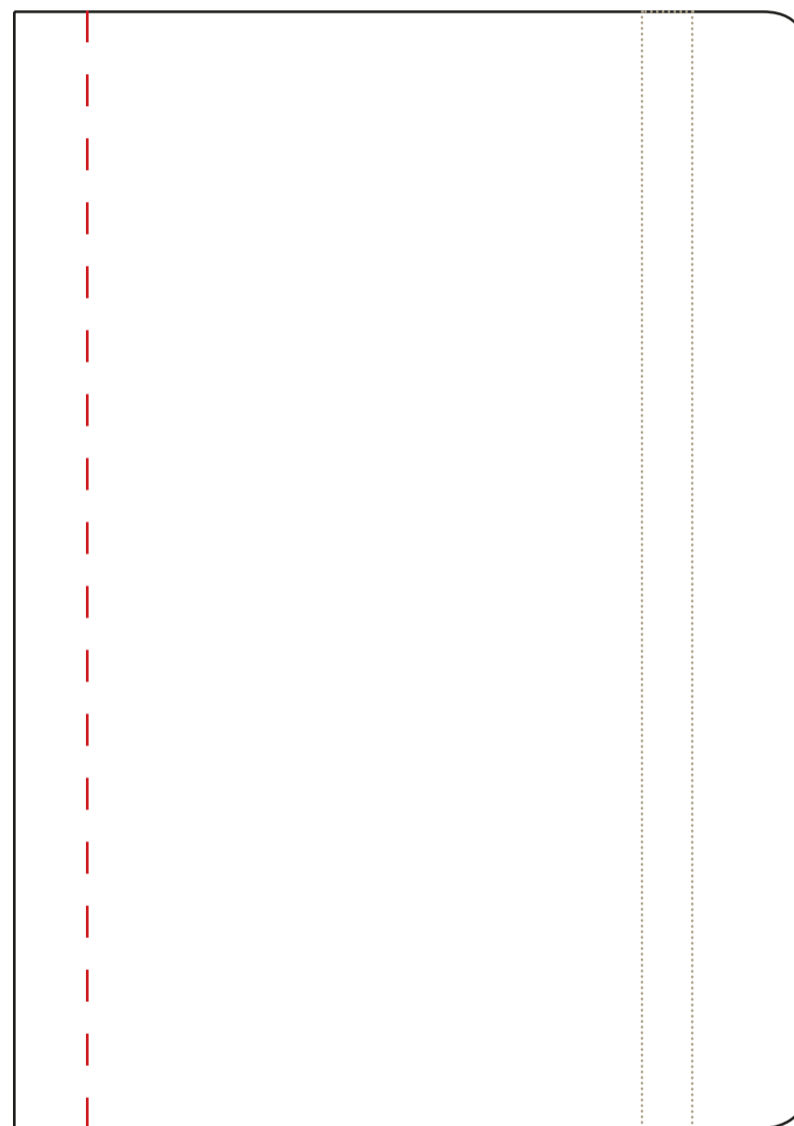
## COVER TEMPLATE

**A6 NOTEBOOK**  
148 x 105mm Cover

**DISCLAIMER:**  
For full bleed designs, add 3mm.

### ARTWORK

Cover size (1:1 scale)  
Elastic = 13mm from edge / 7mm width  
Limit of customisation for stock items



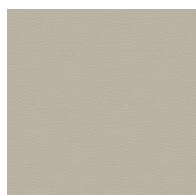
## COLOUR CARDS

### LEATHER

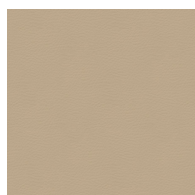
\*Please note that all Pantone codes are approximations and we cannot promise exact matches.

### DETAILS

Only the softest and supplest leathers are suitable for bookbinding. The most popular leather we use is a Nappa direct from Italian tanneries, with a lovely natural grain and a soft wax finish.



REF CODE:  
Lamb  
PANTONE:  
Warm Gray 1 C



REF CODE:  
Oyster  
PANTONE:  
7530 C



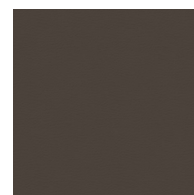
REF CODE:  
Mouton  
PANTONE:  
Warm Gray 8 C



REF CODE:  
Rock  
PANTONE:  
Warm Gray 11 C



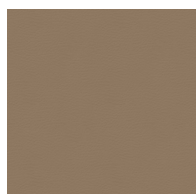
REF CODE:  
Earth  
PANTONE:  
405 C



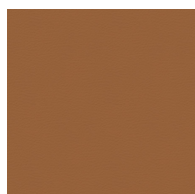
REF CODE:  
Caribou  
PANTONE:



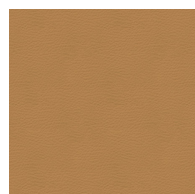
REF CODE:  
Champagne  
PANTONE:  
2317 C



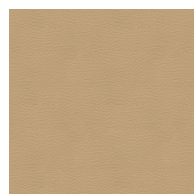
REF CODE:  
Cappuccino  
PANTONE:  
7504 C



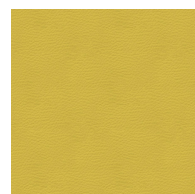
REF CODE:  
Canyon  
PANTONE:  
7505 C



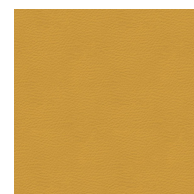
REF CODE:  
Maize  
PANTONE:  
7562 C



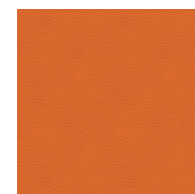
REF CODE:  
Apricot  
PANTONE:  
467 C



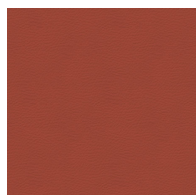
REF CODE:  
Canary  
PANTONE:  
618 C



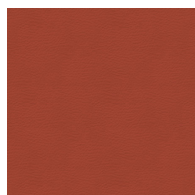
REF CODE:  
Soleil  
PANTONE:  
7556 C



REF CODE:  
Lilium  
PANTONE:  
1605 C



REF CODE:  
Mango  
PANTONE:  
7581 C



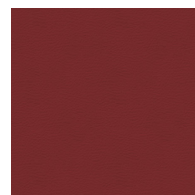
REF CODE:  
Masai  
PANTONE:  
7594 C



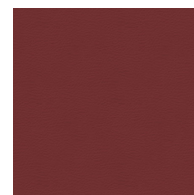
REF CODE:  
Parrot  
PANTONE:  
181 C



REF CODE:  
Santa Claus  
PANTONE:  
7638 C



REF CODE:  
Scarlet  
PANTONE:  
7629 C



REF CODE:  
Phonebox  
PANTONE:  
1817 C

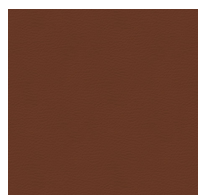


REF CODE:  
Redskin  
PANTONE:  
7603 C

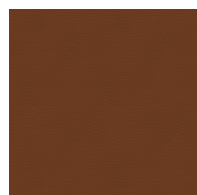
## COLOUR CARDS

### LEATHER

\*Please note that all Pantone codes are approximations and we cannot promise exact matches.



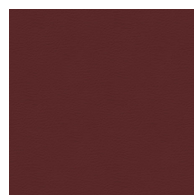
REF CODE:  
Woody  
PANTONE:  
4625 C



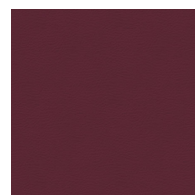
REF CODE:  
Lion  
PANTONE:  
7582 C



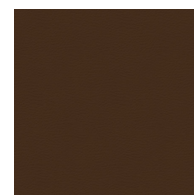
REF CODE:  
Brownrose  
PANTONE:  
7617 C



REF CODE:  
Cremisi  
PANTONE:



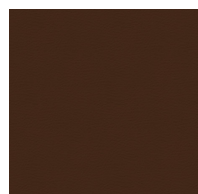
REF CODE:  
Cerise  
PANTONE:  
7449 C



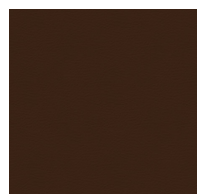
REF CODE:  
Praline  
PANTONE:  
439 C



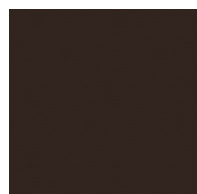
REF CODE:  
Date  
PANTONE:  
Black 5 C



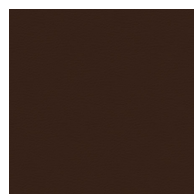
REF CODE:  
Sequoia  
PANTONE:  
Black 4 C



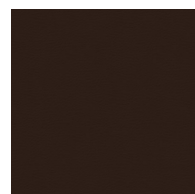
REF CODE:  
Tabacco  
PANTONE:  
Black 7 C



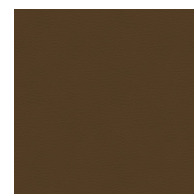
REF CODE:  
Ebony  
PANTONE:  
Black 3 C



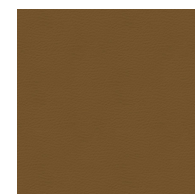
REF CODE:  
Wine  
PANTONE:  
Black 5 C



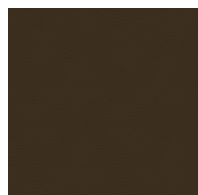
REF CODE:  
Bordeaux  
PANTONE:  
Black C



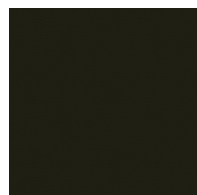
REF CODE:  
Truffle  
PANTONE:  
438 C



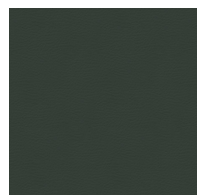
REF CODE:  
Yeti  
PANTONE:  
497 C



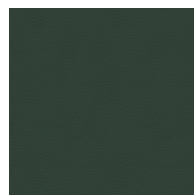
REF CODE:  
Catfish  
PANTONE:  
Black 2 C



REF CODE:  
Loden  
PANTONE:  
447 C



REF CODE:  
Pixie  
PANTONE:  
426 C



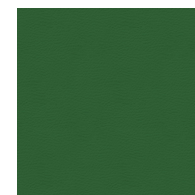
REF CODE:  
Serpentine  
PANTONE:  
7546 C



REF CODE:  
Birch  
PANTONE:  
Black 2 C



REF CODE:  
Aloe  
PANTONE:  
7763 C

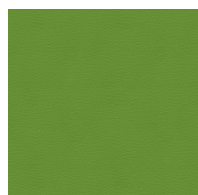


REF CODE:  
Green Ray  
PANTONE:  
350 C

## COLOUR CARDS

### LEATHER

\*Please note that all Pantone codes are approximations and we cannot promise exact matches.



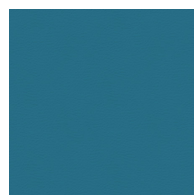
REF CODE:  
Lime  
PANTONE:  
575 C



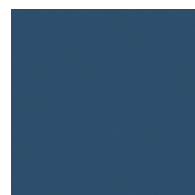
REF CODE:  
Anise  
PANTONE:  
5777 C



REF CODE:  
Aquatic  
PANTONE:  
5483 C



REF CODE:  
Turquoise  
PANTONE:  
5405 C



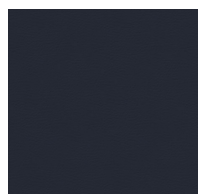
REF CODE:  
Reef  
PANTONE:  
7684 C



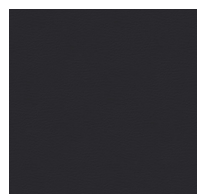
REF CODE:  
Octane  
PANTONE:  
432 C



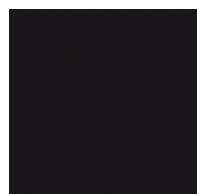
REF CODE:  
Cosmo  
PANTONE:  
7547 C



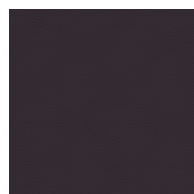
REF CODE:  
Oceania  
PANTONE:  
433 C



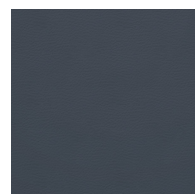
REF CODE:  
Flag  
PANTONE:  
7547 C



REF CODE:  
Deep  
PANTONE:  
426 C



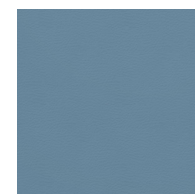
REF CODE:  
Liz  
PANTONE:  
439 C



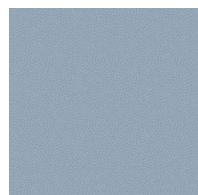
REF CODE:  
Jeans  
PANTONE:  
432 C



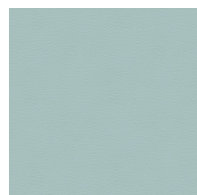
REF CODE:  
Denim  
PANTONE:  
7673 C



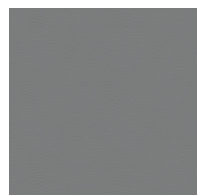
REF CODE:  
Santorini  
PANTONE:  
5425 C



REF CODE:  
Arctic  
PANTONE:  
430 C



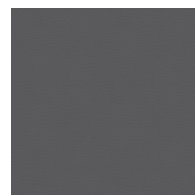
REF CODE:  
Nimbus  
PANTONE:  
7542 C



REF CODE:  
Graphite  
PANTONE:  
877 C



REF CODE:  
Tundra  
PANTONE:  
2360 C



REF CODE:  
Schist  
PANTONE:  
425 C



REF CODE:  
Brain  
PANTONE:  
426 C\*



REF CODE:  
Cook  
PANTONE:  
433 C\*

### Bookblock

4-6 Denbigh Mews  
London  
SW1V 2HQ

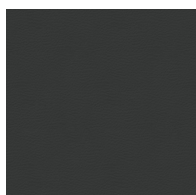
UK / +44 (0) 203 514 1281  
USA / +1 (312) 337-0747

info@bookblock.com  
www.business.bookblock.com

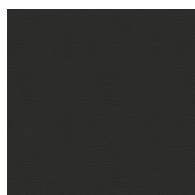
## COLOUR CARDS

### LEATHER

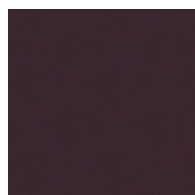
\*Please note that all Pantone codes are approximations and we cannot promise exact matches.



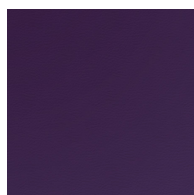
REF CODE:  
Shark  
PANTONE:  
433 C



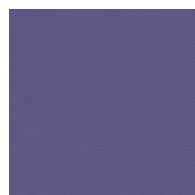
REF CODE:  
Black  
PANTONE:  
426 C



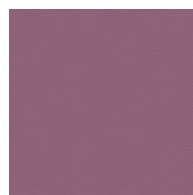
REF CODE:  
Laser  
PANTONE:  
5185 C



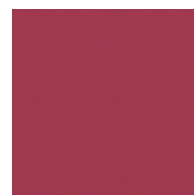
REF CODE:  
Mauve  
PANTONE:  
5125 C



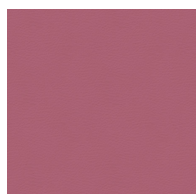
REF CODE:  
Violet  
PANTONE:  
7673 C



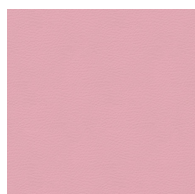
REF CODE:  
Orchid  
PANTONE:  
5195 C



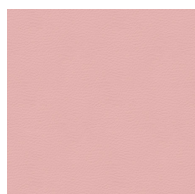
REF CODE:  
Passion  
PANTONE:  
7435 C



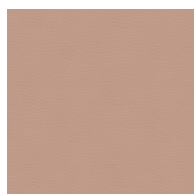
REF CODE:  
Gum  
PANTONE:  
4985 C



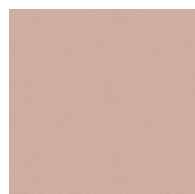
REF CODE:  
Kiss  
PANTONE:  
693 C



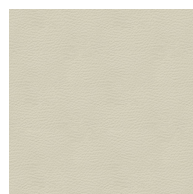
REF CODE:  
Rosa  
PANTONE:  
7633 C



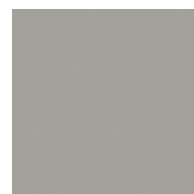
REF CODE:  
Blush Pink  
PANTONE:  
7614 C



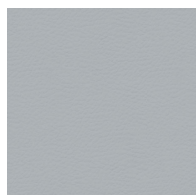
REF CODE:  
Nude  
PANTONE:  
4745 C



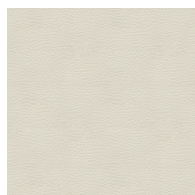
REF CODE:  
Frost  
PANTONE:  
Warm Gray 2 C



REF CODE:  
Plaster  
PANTONE:  
Warm Gray 3 C



REF CODE:  
Azure  
PANTONE:  
Cool Gray 6 C



REF CODE:  
Off White  
PANTONE:  
7605 C



REF CODE:  
White  
PANTONE:  
Cool Gray 1 C

### Bookblock

4-6 Denbig Mews  
London  
SW1V 2HQ

UK / +44 (0) 203 514 1281

USA / +1 (312) 337-0747

info@bookblock.com

www.business.bookblock.com

**Bb.**

**Bookblock**

4-6 Denbigh Mews  
London  
SW1V 2HQ

UK / +44 (0) 203 514 1281  
USA / +1 (312) 337-0747  
info@bookblock.com  
www.business.bookblock.com